

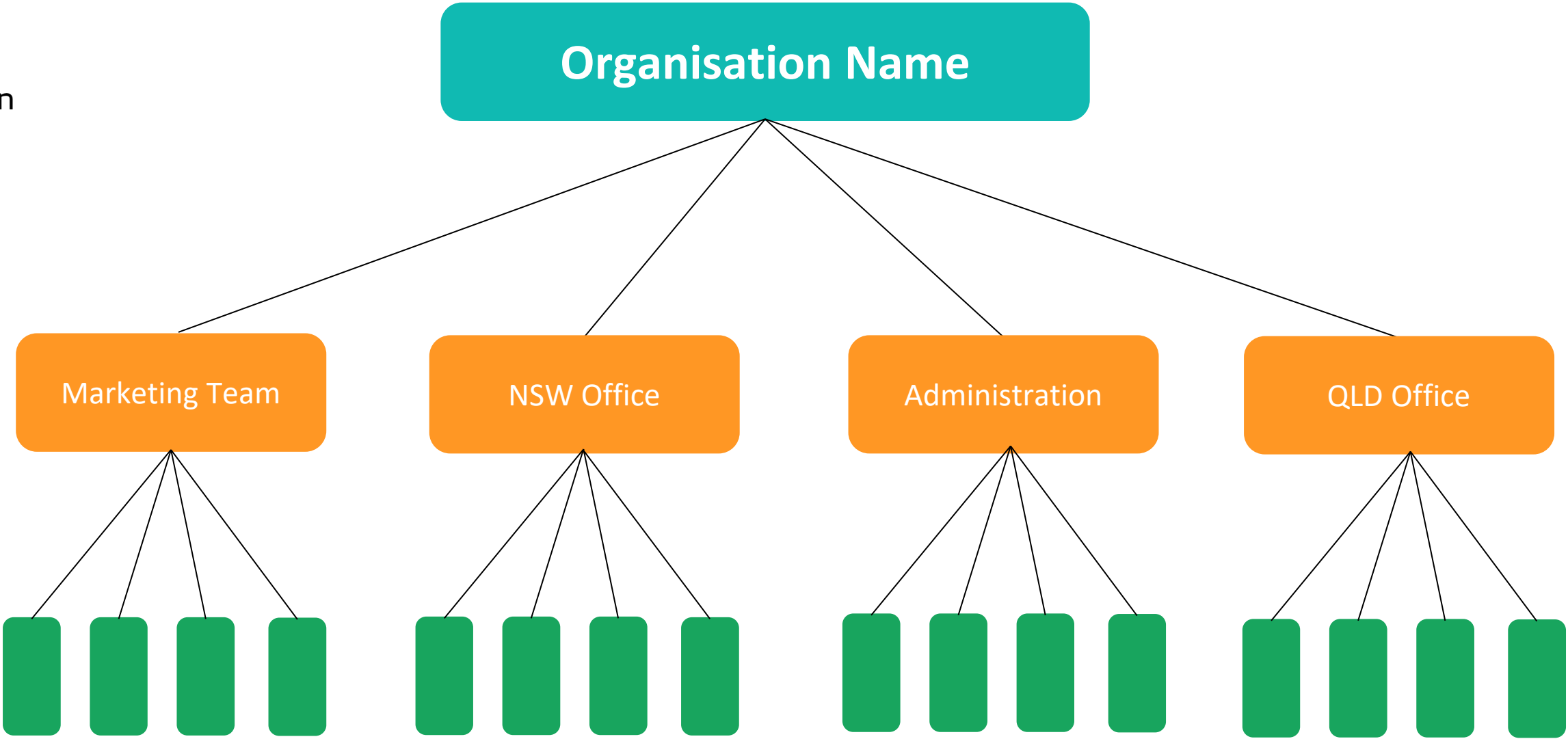
Organisation page set-up

As an Organisation, there are three tier levels to your team set up as outlined below. You can choose to just have one team within your organisation and all participate within one team, or you can choose to have multiple teams within your organisation. This could be based on office location, different divisions or departments or you might even have contractors or sub-entities that want to participate as part of your organisation, it's completely your choice! 😊

Top Tier
Organisation
You will have one lead organisation

Second Tier
Teams
You can have one team or have unlimited teams! It is up to you how you would like to participate.

Third Tier
Individuals
Every team member will be part of a team. This includes employees, family, friends, suppliers etc.



Organisation total of fundraising and progress. Full organisational impact.

Team total fundraising and progress

Individual fundraising and progress